

How the system works

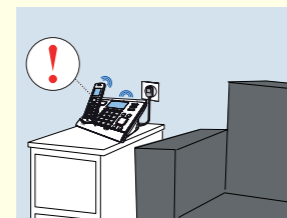


Open/closed sensor
Apply this magnetic open/closed sensor to a door, window, or medicine cabinet to know if it is open or closed.



Telephone system
Includes a telephone base and cordless handset (some models include additional handsets). The base and handset screens show call information and sensor alerts. The sensor sends alerts to the phone system or sends remote alert calls to other numbers you have specified.

Local alert



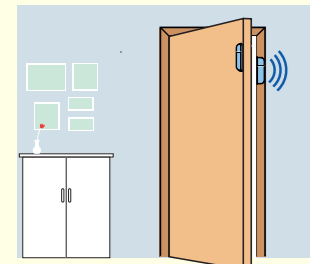
Remote alert



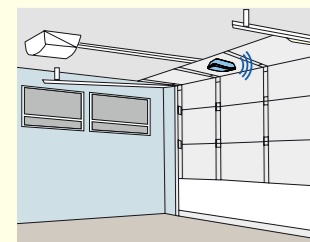
* To set telephone numbers for remote calls, please refer to the **Sensor mode** section in the **Abridged User's Manual**.



Motion sensor
Lets you know when there are visitors, intruders, or pets moving around your home.



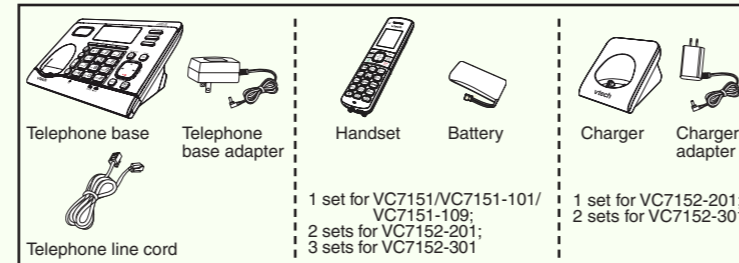
Garage door sensor
Detects whether the garage door is open or closed.



* The combination of sensors depends on the package you purchased.

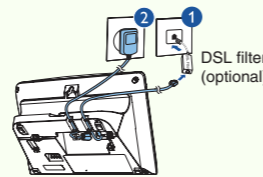
Telephone installation

1 Parts checklist

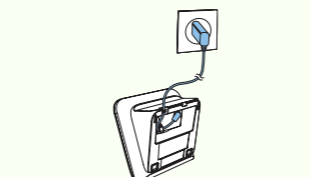


2 Connect

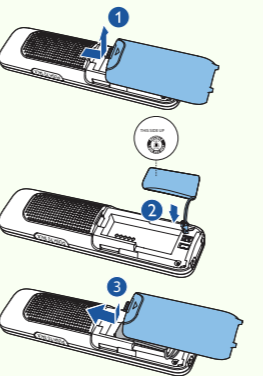
Connect the telephone base



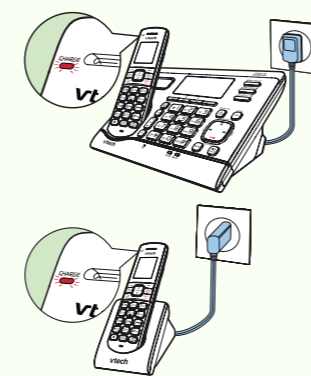
Connect the charger



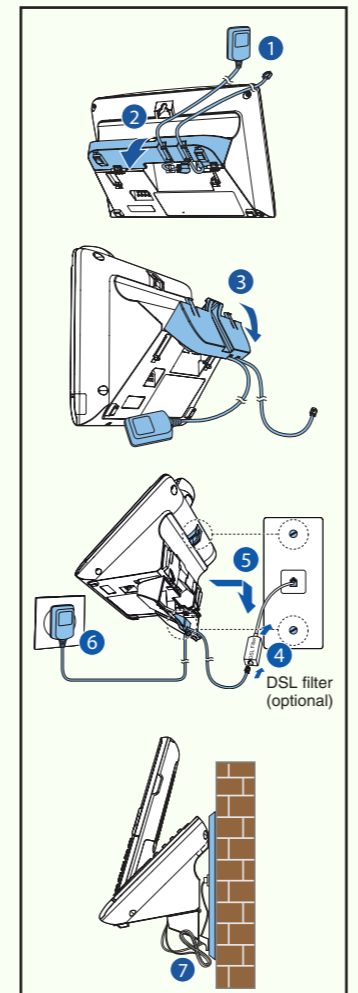
Install the battery



Charge the battery



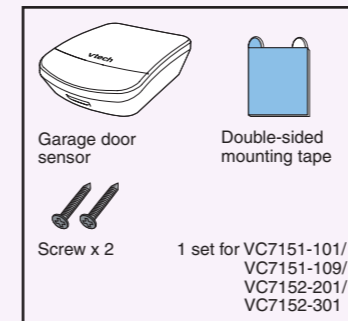
3 Wall mount (optional)



If your package includes a garage door sensor, please read the following section.

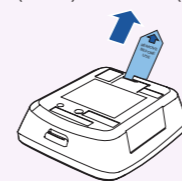
Garage door sensor installation

1 Parts checklist



2 Power on

- NOTES**
- The batteries are pre-installed in your garage door sensor.
 - The garage door sensor is already pre-registered to the telephone base.
 - The batteries operate properly under the temperature between 0°F (-18°C) and 130°F (55°C).



3 Check and locate

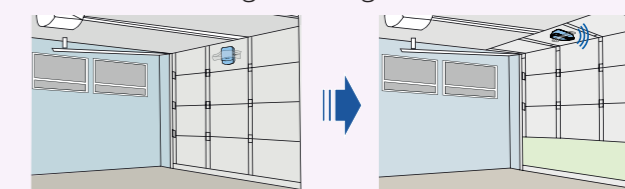
Check the garage door sensor before use
Refer to **Alerts** section below for the alerts.



NOTE

- There is a component inside this sensor to detect orientation. It is normal to hear a rattling sound when tilted.

Test the sensor signal strength

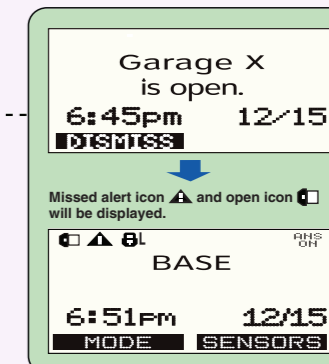
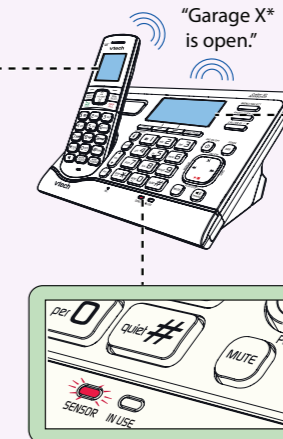
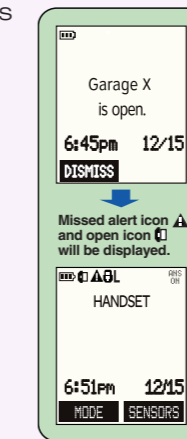


Use your handset to enter the **Sensor setup** menu, and then select the **Check signal** menu. Follow the steps to test the sensor's signal strength, and then exit the sensor setup mode. Make sure you receive alerts when you open the garage door

NOTES

- If **No signal** or **Weak signal** message is displayed in sensor setup mode, or if you do not receive an alert when you open the garage door, move the base closer to the garage or move the sensor closer to the base.
- Use adhesive tape to hold the sensor temporarily in place, and then step away from the sensor before testing.
- Depending on surroundings and obstructing factors, like concrete garage walls, a tall metal storage cabinet, or an SUV, the sensor may not transmit to the base properly.

Alerts

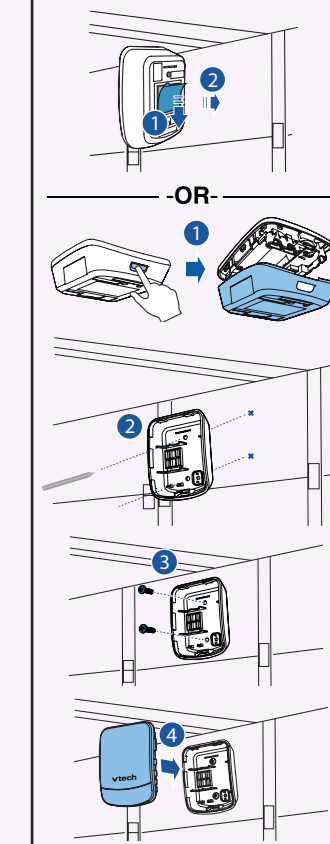


* **Garage X** refers to the sensor's name. **X** refers to the system-assigned number of the sensor.

4 Mount

NOTE

- Make sure the mounting surface is clean. A textured surface or any imperfections to a smooth surface can keep the mounting tape from making a strong bond.



Disclaimer

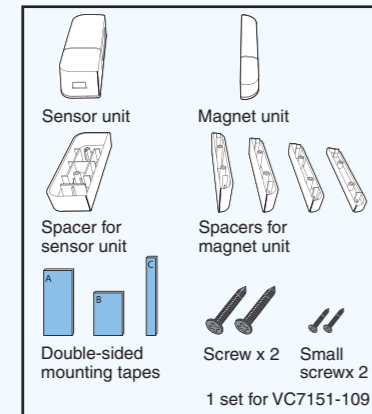
This product is not designed for security purposes. When properly installed and maintained, this product may in some cases reduce the risk of burglary, fire, robbery or other events occurring without providing an alarm. VTech is not responsible for losses, injury, or damage resulting from the use of this product.

This product is covered by U.S. Patent #8,825,043. Other patents may be pending.

If your package includes a **open/closed sensor**, please read the following section.

Open/closed sensor installation

1 Parts checklist



2 Power on

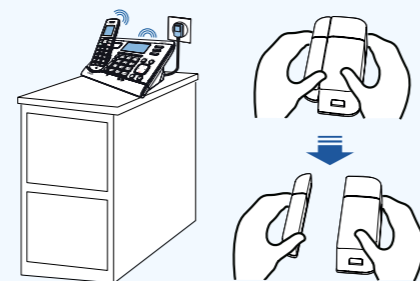
- NOTES**
- The batteries are pre-installed in your open/closed sensor.
 - The open/closed sensor is already pre-registered to the telephone base.
 - The batteries operate properly under the temperature between 0°F (-18°C) and 130°F (55°C).



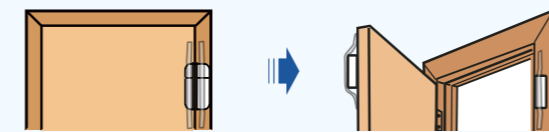
3 Check and locate

Check the open/closed sensor before use

Refer to **Alerts** section below for the alerts.



Test the sensor signal strength

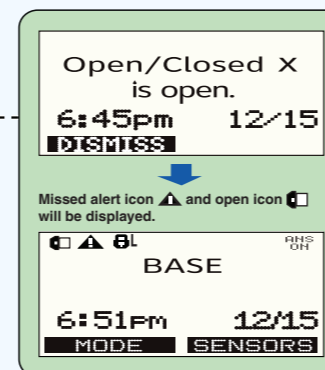
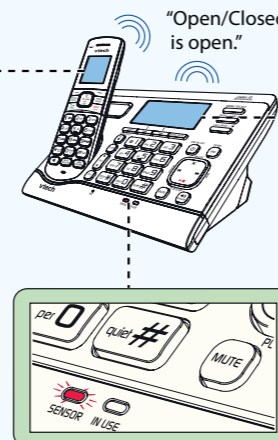
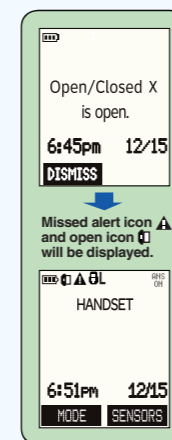


Use your handset to enter the **Sensor setup** menu, and then select the **Check signal** menu. Follow the steps to test the sensor's signal strength, and then exit the sensor setup mode. Make sure you receive alerts when you open the door as usual.

NOTES

- If **No signal** or **Weak signal** message is displayed in sensor setup mode, or if you do not receive an alert when you open the door, move the base closer to the mounting location or move the sensor closer to the base.
- Use adhesive tape to hold the sensor temporarily in place.
- Mount the sensor to a higher position to avoid obstacles or blockages. Depending on surroundings and obstructing factors, like walls or cabinets, the sensor may not transmit to the base properly.

Alerts



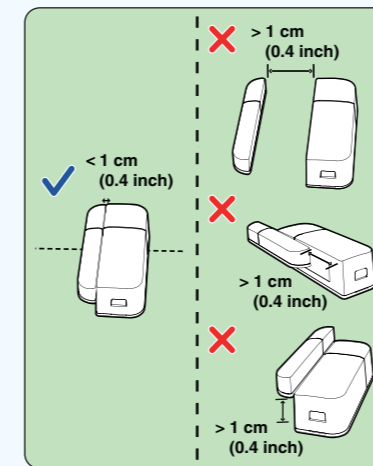
* **Open/Closed X** refers to the sensor's name.
X refers to the system-assigned number of the sensor.

4 Mount

We recommend you to mount the magnet unit on a door, window, or medicine cabinet, and mount the sensor unit on its respective frame.

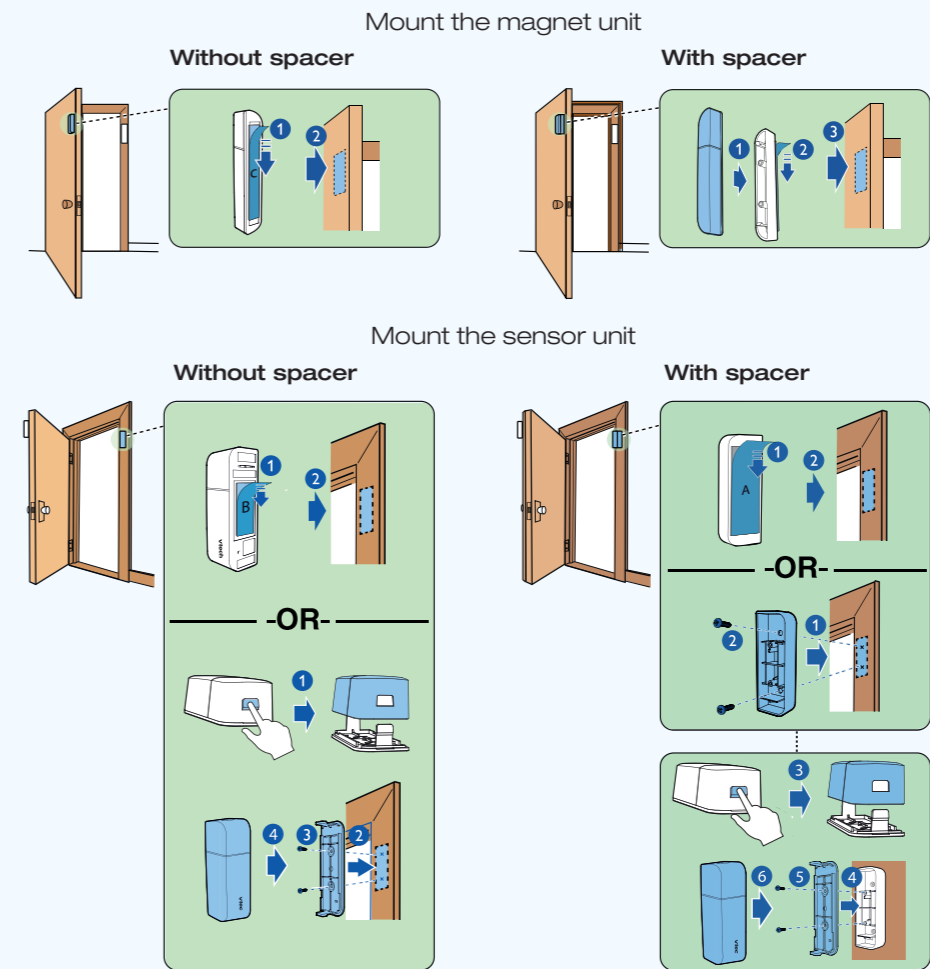
NOTES

- Make sure the mounting surface is clean. A textured surface or any imperfections to a smooth surface can keep the mounting tape from making a strong bond.
- Make sure you align the magnet unit with sensor unit when mounting.
- The distance between the sensor unit and magnet unit must be **less than 1 cm (0.4 inch)**.
- The door images in this installation guide are for conceptual reference only.



TIP

- If there is a difference in level between the door, window, or medicine cabinet and its respective frame, or the frame is too narrow or has some decorative molding, you can choose to mount the open/closed sensor with spacer. You can also mount the magnet unit on the frame, and the sensor unit on the door, window, or medicine cabinet instead.



Go to www.vtechphones.com to register your product for enhanced warranty support and the latest VTech product news.

VC7151
 VC7151-101
 VC7151-109
 VC7152-201
 VC7152-301

Wireless Monitoring System with Cordless Telephone

